

COME FOR PHILADELPHIA. STAY FOR Philly.

Greater Philadelphia is made up of 11 counties across three states. With a rich cultural history, careers in future-focused industries, and endless entertainment, one thing is certain – you're sure to find plenty of reasons why you should **"Stay for Philly!"**

ALL ABOUT US

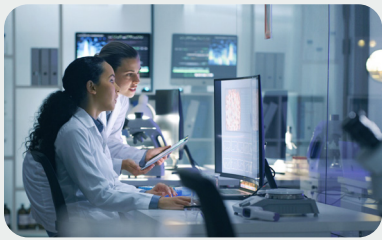
Population: 6.5 Million

Median Age: 39.5

Region Info: Spanning 11 counties and three states

Median Home Price: \$356,700

Median 2 bed Room Apartment Rent: \$1,456



BUSINESS CULTURE >

Ranked a Top 5

Work from home city

Top 10

cluster of biopharma companies in the U.S.

Among the world's top 25

global startup ecosystems

#3 best city for diversity in STEM

STELLAR EDUCATION >

Home to Top K-12 schools

135 post-secondary schools

#4 best US high school (Julia Masterman)

#1 best school district in Pennsylvania (Radnor Township School District)

KEEPING YOU HEALTHY >

4 national cancer institutes

in the Greater Philadelphia Region

143 hospitals in the Greater Philadelphia Area

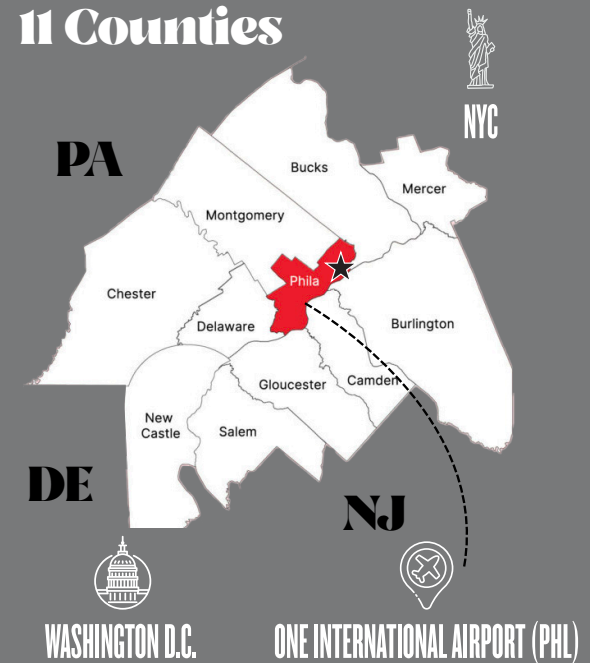
Physicians per capita is 15% higher than the U.S. average

#4 best hospital for children (Children's Hospital of Philadelphia)

#2 best private school in the U.S. with a focus on STEM education (Princeton International School of Math and Science (PISMS))

#3 best community college in Pennsylvania (Bucks County Community College)

Greater Philly's 11 Counties



NO CAR? NO PROBLEM!

Connected to people near and far:

- 60% of the US Population lives within two-hour flight
- 40% of the US Population lives within a one-day drive

Less than 3 hours away:

- New York City
- Baltimore
- Washington D.C.

Ranked one of the most walkable cities in the U.S.

Public modes of transportation:

- Regional Rail
- Subway System
- Trolley Lines
- Buses
- Norristown High-Speed Line



PHILLY CULTURE >

8 professional sports teams

4,000+ street murals

Dozens of **historic museums and sites**

Over **150** theater, dance and music companies

PHS Philadelphia Flower Show is the nation's largest and longest running horticultural event

The Mummer's Parade is the longest-running continuous folk parade in the US

Philadelphia Welcome America Festival is a 16-day festival leading up to Fourth of July

Our Communities >

Countryside

With picturesque landscapes and close-knit communities spanning across Delaware, Pennsylvania and New Jersey, the countryside is known as America's Garden Capital and offers a quieter, more serene lifestyle.

Historic Suburbs

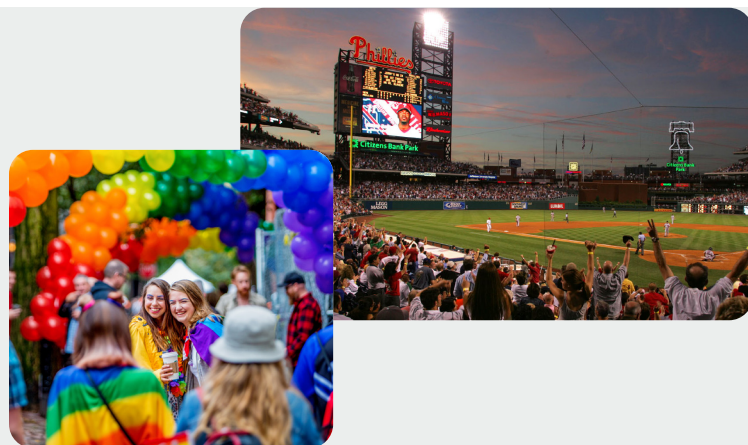
Tree-lined streets, vibrant town centers and historic communities characterize Greater Philly's Historic Suburb Neighborhoods located across Pennsylvania and New Jersey.

Main Street

Blending small-town charm with cosmopolitan appeal, many Main Street neighborhoods are recognized as some of the best places to live in the United States.

Urban Centers

Distinguishable by their dense, urban feel and historic-site preservation, Urban Centers boast some of the most culturally diverse and civically engaged communities on the East Coast.



LOCAL EATS & DRINKS

100+ Craft Breweries

The Reading Terminal Market is Philly's oldest public market

Dozens of classic down-home diners

Thriving international food scene

Nearly 70 James Beard-Awarded restaurants, bakeries, bars and chefs in Philly

No shortage of the famous Philly Cheesesteak



GET OUT IN NATURE

30 public urban gardens, **1** national river and **3** state scenic rivers

Parks

- Fairmount Park, the largest urban landscaped park in the world
- Gettysburg National Military Park
- Valley Forge National Historic Park
- Ridley Creek State Park



**SELECT
GREATER
PHILADELPHIA**



stayforphilly.com